



127th // EST. 1889

INTERNATIONAL FOUNDATION PROSPECTUS

2017 ENTRY

Visit www.cityplym.ac.uk/international

TRULY UK INTERNATIONAL FOUNDATION

CITY COLLEGE PLYMOUTH



LEAD YOUR PATHWAY AROUND THE WORLD

100%
PASS RATE

86%
DISTINCTION

13%
MERIT

1%
PASS



2013
15 DISTINCTIONS, 1 MERIT



2014
30 DISTINCTIONS, 3 MERITS, 1 PASS



2015
35 DISTINCTIONS, 8 MERITS



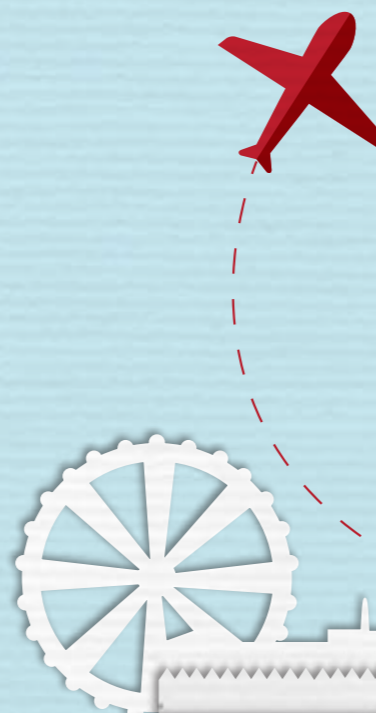
EUROPE
UNITED KINGDOM
FRANCE
GERMANY
SPAIN
SWITZERLAND

NORTH AMERICA
UNITED STATES OF AMERICA
CANADA

ASIA
MALAYSIA
KOREA

AUSTRALIA

NEW ZEALAND



INTERNATIONAL FOUNDATION PROGRAMME

The fast track City College Plymouth International Foundation Course (IFC) forms an essential part of our international portfolio. It is a challenging and inspiring programme that has been designed to provide international students with the academic literacy, skills and knowledge required for undergraduate study in a UK higher education establishment.

The programme is ideal for international students who wish to apply for a UK degree and need to improve English language and/or academic knowledge. It can also provide a route for those who do not meet those requirements but wish to gain a firm foundation in studying in a British academic environment before starting their undergraduate or post-graduate studies.

Students will develop subject knowledge through classes with specialist subject lecturers and gain academic literacy and language skills in classes taught by skilled teachers of English for Academic Purposes (EAP).

A key feature of the programme is our tutorial provision. Students are assigned a personal tutor with whom they meet weekly in small groups. In addition, students have 1-1 tutorials each term with the programme leader.

Students are encouraged to engage in setting personal learning goals and to monitor their own attendance and progress.

To help the students make the transition to higher education, there is a designated HE suite for use by the students on this course.

The college has an International office to look after the interests of our students. Pastoral support is a priority of the college. All students under the age of 18 are placed with host families who have been inspected by the college.

COURSE ASSESSMENT AND GRADING

There is a strong focus on formative assessment, which is supported through a cycle of feedback enabling students to progress through sets of skills in order to become confident, independent learners within a British higher educational environment.

Summative assessment may take the form of examinations, essays and shorter pieces of assessed work, individual and group presentations in addition to research projects.

Progression is recognised in the assessment scheme, which tests cognitive skills, moving from understanding and explaining simple concepts through to synthesising and evaluating arguments.

GRADING

Pass marks for each summative assignment will be awarded as follows:

PASS	40 - 54%
PASS WITH MERIT	55 - 69%
PASS WITH DISTINCTION	70% +

OVERALL CLASSIFICATION

The overall classification will be determined by final scores in relation to their weighting of the specific modules except for key skills, ICT, and English for IELTS and Academic Purposes.

ENTRY REQUIREMENT

ACADEMIC

5 academic credits including English and Math plus relevant subjects (actual or forecast results - SPM, GCE O LEVEL, UEC or other equivalent qualification)

ENGLISH

Min IELTS score 5.0 with no more than 1 score below 5.0, and no score below 4.5 or equivalent of a recognised qualification

KEY INFORMATION

minimum
21 HOURS
per week

students are expected
to sit for **IELTS**
examination in the
2nd term of the course

class size is about
15 students
the maximum

■ **NQF LEVEL**
LEVEL 3
(PRE-UNIVERSITY LEVEL)

■ **COURSE DURATION**
24 WEEKS

■ **COURSE STARTS DATE**
23/01/2017

■ **COURSE ENDS DATE**
07/07/2017



INTERNATIONAL FOUNDATION PROGRAMME

SCIENCE PATHWAY

COURSE ACADEMIC CONTENT

- MODULE 1:** Biology or Physics
- MODULE 2:** Chemistry
- MODULE 3:** Advance Maths
- MODULE 4:** English for Academic Purpose
- MODULE 5:** Math
- MODULE 6:** Study Skills

ABOUT THE COURSE

The Science Foundation is an intensive course designed to prepare students for theoretical knowledge enhanced by the laboratory and report writing skills to progress smoothly onto science based undergraduate degree. With Chemistry and Advanced Math as the core compulsory subjects in the foundation provides substantial understanding of scientific principles. Further sub divisions of the core sciences which are the specific Biology or Physics pathway, allow students for a more balanced study curriculum focusing on their specification of academic interest. Biology pathway leads to pursuit of biology related courses like Pharmacy, Bio Medical Science and Physic pathway progress generally to Engineering, Computer Sciences, and so on. The Science Foundation offers multi-exit progression not limiting to Science Degree but other non-science related courses.



INTERNATIONAL FOUNDATION PROGRAMME

BUSINESS PATHWAY

COURSE ACADEMIC CONTENT

- MODULE 1:** Understanding Business
- MODULE 2:** Accounting & Finance
- MODULE 3:** Business Law
- MODULE 4:** English for Academic Purpose
- MODULE 5:** Math
- MODULE 6:** Study Skills

ABOUT THE COURSE

The Business International Foundation Programme at City College Plymouth covers every aspects of the business world, from the basic understanding of business to accounting and finance and business law. With additional supports from the college academic team and welfare team, City College Plymouth graduates will have the practical skills and knowledge which at least equivalent to A Level, to further study business and relevant subjects at university level.

THE PACKAGE FEE

£12,000 NETT

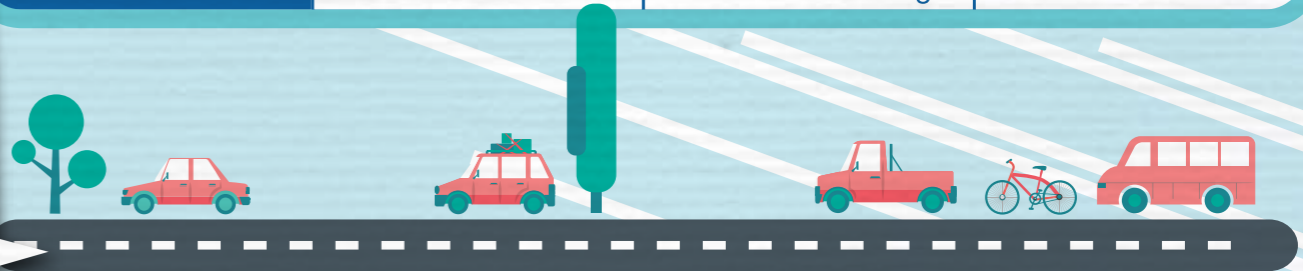
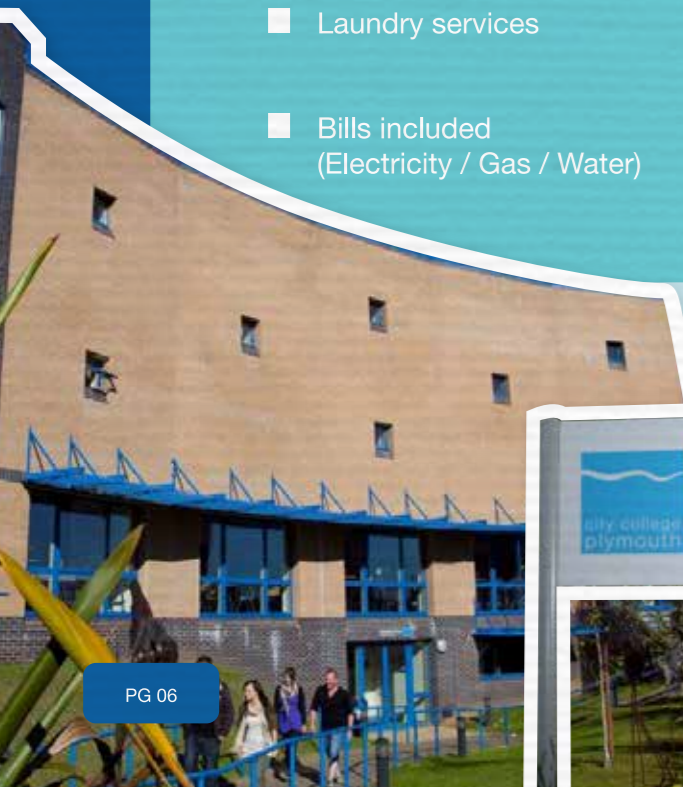
WHICH INCLUDE --

- Home-stay single room accommodation
- Tuition fee
- 3 meals per day
- Laundry services
- Bills included (Electricity / Gas / Water)
- Free college bus from City Centre to college
- Airport pickups (Return airport transfer from Heathrow Airport)
- All college facilities including library and resource centre
- Includes Internet fee at host accommodation
- IELTS examination fee is included and to be taken during study



ALTERNATE ACCOMODATION OPTIONS

Accommodation Type	Home Stay	Student Hall		Student House
Room Type	*Twin Sharing	Single Ensuite	Studio	Single
Price	£10,000	£13,000	£14,000	£12,000
Food	Yes	No	No	No
Location	Various	At City Centre (Royal Parade)		Various
Distance to college	Various	2 mins to bus stop for free shuttle to college		Various



THE CITY OF PLYMOUTH

- It is located in the beautiful South-West of England and has a population of 275,000
- It is easy to reach from London, either by train (3 hours) or coach (5 hours)
- It is a coastal city, surrounded by many miles of dramatic coastline and beaches
- It is famous for its maritime history and has one of the most beautiful natural harbours in the world
- It has a modern shopping centre with a large shopping mall full of fashion and shoe shops



CITY COLLEGE PLYMOUTH

City College Plymouth is one of the biggest government funded college in Plymouth that train 10% of Plymouth population.

Its 127 years of establishment earns the college a high quality of teaching and ensuring continuous accreditation of its courses from QAA, Ofsted and other accrediting bodies in UK.

The college host a wide range for courses from engineering to pre-university level and vocational courses, giving the college the edge of knowledge in education industry.

The close partnership with Plymouth University in various project collaborations enhance transferable skills from theories to real life setting, exploring the innovative side of the students.



10 REASONS

- 01** PARTNER COLLEGE OF PLYMOUTH UNIVERSITY
- 02** OPPORTUNITY FOR ALL: TO PREPARE FOR UNIVERSITY OR FOR EMPLOYMENT
- 03** LOW COST OF LIVING
- 04** VALUE FOR MONEY LOW FEES COMPARED WITH UNIVERSITY AND PRIVATE COLLEGE
- 05** GOOD NATIONALITY MIX AMONGST INTERNATIONAL STUDENTS
- 06** SAFE, CLEAN ENVIRONMENT
- 07** WIDE RANGE OF GOOD QUALITY AFFORDABLE ACCOMMODATION
- 08** GREAT LOCATION NEAR TO THE SEA AND COUNTRYSIDE
- 09** EXCELLENT LEISURE FACILITIES, PARTICULARLY FOR WATER SPORTS
- 10** INTERNATIONAL OFFICE PROVIDES A FRIENDLY AND COMPREHENSIVE SERVICE

620
STAFF

4,070
FULL-TIME STUDENTS

12,900
ENROLMENTS EACH YEAR
(including part-time, he (780) and international students)

160
INTERNATIONAL STUDENTS
FROM OVER 40 DIFFERENT COUNTRIES IN 2014/15

STUDENT PROGRESSION TRACK RECORD

DEGREE SUBJECTS	JANUARY 2015 FOUNDATION STUDENT OFFERS OBTAINED																					
	Actuarial Science	Aerospace Engineering	Architecture	Banking and Finance	Biomedical Science	Business and Marketing	Business Management	Chemical Engineering	Computer Science	English / Creative Writing	Event Management	Fashion Marketing	Finance	Human Resource Management	International Business Management	Law	Mechanical Engineering	Mechatronics	Music	Naval Architecture	Pharmacy	Speech Therapy
Bath Spa University																						
Bournemouth University																						
Canterbury Christ-Church University																						
Cardiff University *																						
City University London																						
Coventry University																						
Leeds Beckett University																						
Middlesex University																						
Newcastle University *																						
Northumbria University																						
Plymouth University																						
Queen's University Belfast *																						
Robert Gordon University																						
Southampton Solent University																						
Sunderland University																						
Swansea University																						
University of Aston																						
University of Birmingham *																						
University of Brighton																						
University of Chester																						
University of Cumbria																						
University of East Anglia																						
University of East London																						
University of Essex																						
University of Glasgow *																						
University of Kent																						
University of Law																						
University of Leeds *																						
University of Leicester																						
University of Liverpool *																						
University of Nottingham *																						
University of Portsmouth																						
University of Reading																						
University of Sheffield *																						
University of Southampton *																						
University of Sussex																						
University of Ulster																						
University of West of England																						
University of Winchester																						
University of York *																						

*Russel Group Universities

STUDENT TESTIMONIALS

Peaceful city, lovely teacher and good people. This make up a perfect place for me to study, explore and interact with the United Kingdom's society. Life in UK is very interesting. Although it's just a short foundation course, I have learnt many new things such we have many chance to explore bigger world by traveling around to many historical and memorable places that we might not have a chance to see in our own country.

Plymouth is really peaceful, full of helpful and caring people, this makes this place's very special. Moreover, the college is good too. I want to thank PDVL and college for introducing this college to me and giving me this amazing chance to grow and learn in this wonderful surrounding. Thank you all wonderful teacher, I have did very well for my foundation course and get into University of Southampton to study Actuarial Science, like what I dreamt to. I'm sure this is the place for us, student, to achieve our dream.



N NARAVIT NORAKIM

Former Student (from Thailand)
Achieved Distinction in Foundation
BSc (Hons) Actuarial Science,
University of Southampton

The main reasons that I chose the foundation are to improve my English within a short period of time to get ready for my UK tertiary studies and the guaranteed small class size, fewer than 15 students, allowed us to have more time to interact with the tutors. Once you have difficulties, speak it out, both the tutors and the international officers are always there to help.

Living with a host family is honestly what made my study very rewarding. It improved not only my English listening and speaking but also how to get along with others. We talked and shared almost every day during dinner. Basically my host family and my roommate were those who get rid of my homesickness during the foundation. The hidden rule is that you need to speak to others instead of locking yourself in the room. Life in UK is pretty serenity. Historic buildings, cathedrals and lots of things make traveling in the UK very exciting. Shops normally open from 10am to 5pm. The pleasant warm summers and cool winters is what I enjoy too!

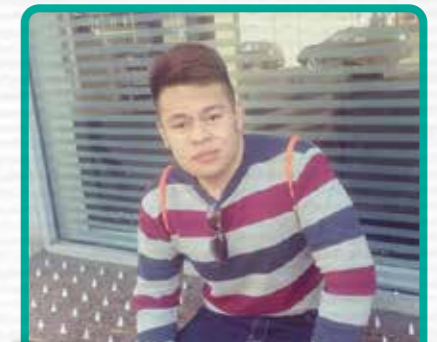


R REBECCA TIONG JIE

Former Student (from Malaysia)
Achieved Distinction in Foundation
BA (Hons) International Business,
Plymouth University

City College Plymouth is one of the best colleges in Plymouth. Compared to my former studies, lecturers were patient and caring. Because of the small class size, lecturers, I was able to seek help immediately from lecturer whenever I needed in my studies. Besides, I found myself gained more knowledge outside of the books. College also provided a great host family to me. Living with a British host family was a great opportunity for me to improve my English speaking and listening skills.

I adapted to the strong British accent quickly because of my constant conversations with the host. Coming from a Muslim background, I was most worried about the food. To my surprise, the host family provided Halal food and I could rest assured to continue to practice my faith and belief as a Muslim. Thanks to college and PDVL for the excellent quality and services to ensure my foundation studies a rewarding one and smooth progression to my degree studies.



M MOHD ZHARIF AIZAT SAMSUDIN

Former Student (from Malaysia)
Achieved Distinction in Foundation
BA (Hons) Business Management,
Northumbria University

UNIVERSITY PLACEMENT

University placement is handled by PDVL, the college sole representative in South East Asia (other than Vietnam).

Below are official progression routes for the course which are confirmed by these two universities as below:

PLYMOUTH UNIVERSITY

Depending on degree courses students intending to progress

UNIVERSITY OF ESSEX

Foundation in City College Plymouth will be accepted into first year degree in University of Essex with 65% (BBB) except Biomedical and Biochemistry. 70% (ABB) for Actuarial Science, and the four Integrated Masters courses in Computer Science, Marine Biology, Electronic Engineering and Telecommunications Engineering.

However, students are able to apply and progress onto various courses at other universities.

PDVL meets all students one-to-one at City College Plymouth ends of March or beginning of April for university placement. Consultation will be given to each student before application is submitted to UCAS.

For the past few years our students obtained offers from the following reputable universities:

UNITED KINGDOM

- | | |
|---|---|
| <ul style="list-style-type: none"> • Aberystwyth University • Bath Spa University • Birmingham City University • Bournemouth University • Cardiff University • Canterbury Christ Church University • City University London • Coventry University • De Monfort University • Herriot-Watt University • Keele University • Newcastle University • Northumbria University • Queen's University Belfast • Robert Gordon University • Royal Holloway, University of London • Southampton Solent University • Strathclyde University • Swansea University • Teesside University • University of Birmingham • University of Brighton | <ul style="list-style-type: none"> • University of Chester • University of Cumbria • University of Derby • University of East Anglia • University of Glasgow • University of Huddersfield • University of Kent • University of Leeds • University of Leicester • University of Liverpool • University of Nottingham • University of Portsmouth • University of Reading • University of Sheffield • University of Southampton • University of St Mark and St John • University of Sunderland • University of Sussex • University of West of England, Bristol • University of Winchester • University of York • York St John University |
|---|---|

AUSTRALIA

- University of Newcastle
- RMIT University Melbourne
- University of Tasmania

NEW ZEALAND

- University of Canterbury

Our students also obtained offers from the following countries' universities

- USA
- Korea
- Malaysia
- Germany



FAQ

Is the Foundation an intensive course?

// The total teaching hours per week is up to 21 hours. With shorter term break, it would be slightly intensive yet manageable. College guarantees will finish the syllabus.

Is the foundation course recognized by UK universities?

// City College Plymouth is awarded by Ofsted to be good college with outstanding features. Ofsted is the office for Standards in Education, Children's Services and Skills. (Cited www.gov.uk/government/organisations/ofsted) 6 months foundation syllabus adopt the traditional college international foundation which has been running for almost 2 decades. Our students get offers from some Top UK universities.

What kind of academic support provided to students?

// Guaranteed small size class to ensure individual assistance available from lecturers.

Do I need to sit for IELTS to apply for the course?

// A grade C or above in English from student with SPM / O-Level syllabus is needed in waiver of IELTS.

How is the further degree study placement after foundation?

// PDVL will be handling degree progression services to ourpanel universities as early as April depending on readiness of the academic documents (preparing for UK degree intake in September)

Is there any sport facilities provided?

// Sport Facilities will be available at both college and public sport center in Plymouth City.

Is the host accommodation safe?

// Hosts are carefully inspected and selected by the college.

Do I need visa?

// Students from commonwealth country will be granted with short term student visa upon arrival. Student not from the category will need to apply short term student visa prior at their home country.

What documents do I need to show when I enter UK?

// Document packs will be prepared by PDVL to ensure student is well prepared. Document pack includes confirmation letter from college confirming payment and study placement, a returned flight ticket and other relevant documents.

How do I pay my fees?

// By direct bank transfer or credit card payment to the college.

Is there any extra cost students have to pay after all?

// No extra charges will be imposed unless student takes additional classes in or outside of college & other college facilities like gym membership fee.

How much of estimated pocket money I have to prepare for the whole programme?

// Estimated at GBP 500 to GBP 1000.

Anyone from your agency will be flying together to the college?

// We arrange consultant to fly along with students to the college and help students settling in for the accommodation and registration at college.

Do we have to buy Health Insurance for the student?

// Not compulsory but recommended.



01 FROM LONDON HEATHROW AIRPORT

3 hours 30 minutes by car (around 230 miles)

// All major airlines fly between South East Asia and London Heathrow Airport.

// Students may take direct National Express coach from Terminal 2/3 to Plymouth and it takes around 4 hours 30 minutes and cost £35

02 FROM EXETER AIRPORT

55 minutes (around 50 miles)

// Airlines that have connection to Exeter Airports (with 2 connections) are Etihad Airlines, Qatar Airlines, Emirates Airline, British Airways, and KLM.

// Students may take taxi to Exeter train station and transfer to Plymouth by train. It is 1 hour train journey and cost £4.30.





■ **KL MAIN OFFICE**

Unit 2-16, PV128, Jalan Genting Klang, 53300 Kuala Lumpur, Malaysia.

Tel 03-4141 8180 **Email** kl@pd-vl.com

■ **PENANG OFFICE**

Level 16, Gurney Paragon Office Tower, Jalan Kelawei, Georgetown, 10250 Penang.

Tel 010-2357 958 **Email** penang@pd-vl.com

(Consultation only available upon phone appointment in advance)

■ **NILAI OFFICE**

LK2-01-3A, Laman Komersial, Putra Nilai, 71800 Nilai, Negeri Sembilan.

Tel 06-7330 844 **Email** nilai@pd-vl.com

■ **SIBU OFFICE**

Floor 2, No 12 Lorong Wong King Huo 3A, 96000 Sibul, Sarawak.

Tel 084-339 915 **Email** sibul@pd-vl.com

■ **KOTA KINABALU OFFICE**

Lot No 1, 3rd Floor, Block A, Damai Point, Luyang, 88300 Kota Kinabalu, Sabah

Tel 088-253 992 **Email** kotakinabalu@pd-vl.com

■ **KUCHING OFFICE**

ICUBE INNOVATION SDN BHD

B424-B432, Tower B2, Level 4, ICOM Square Jalan Pending, 93450 Kuching, Sarawak

Tel 019-859 9818 **Email** kuching@pd-vl.com